

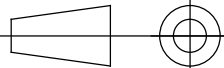


La proprietà del presente disegno e' di
DAIKIN APPLIED EUROPE S.p.A.
La riproduzione, anche se parziale, e la diffusione
senza autorizzazione sono vietate a termini di legge.
This document is reserved property of
DAIKIN APPLIED EUROPE S.p.A.
Reproduction or use for any purpose
without authorization is strictly forbidden by law.

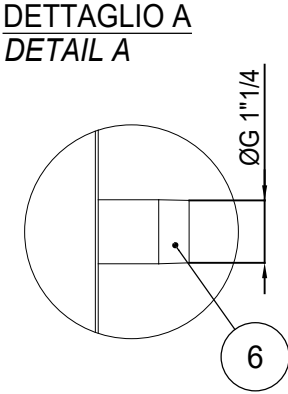
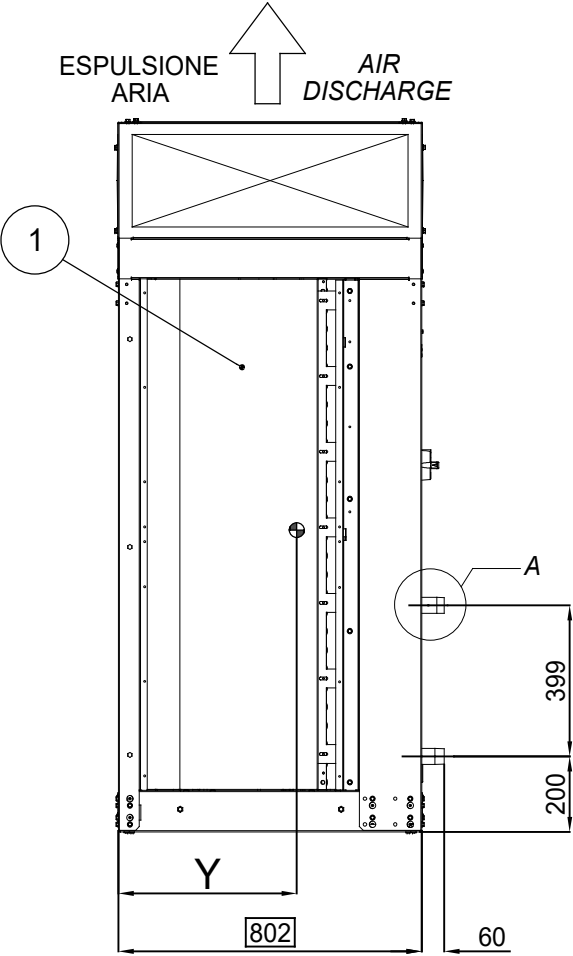
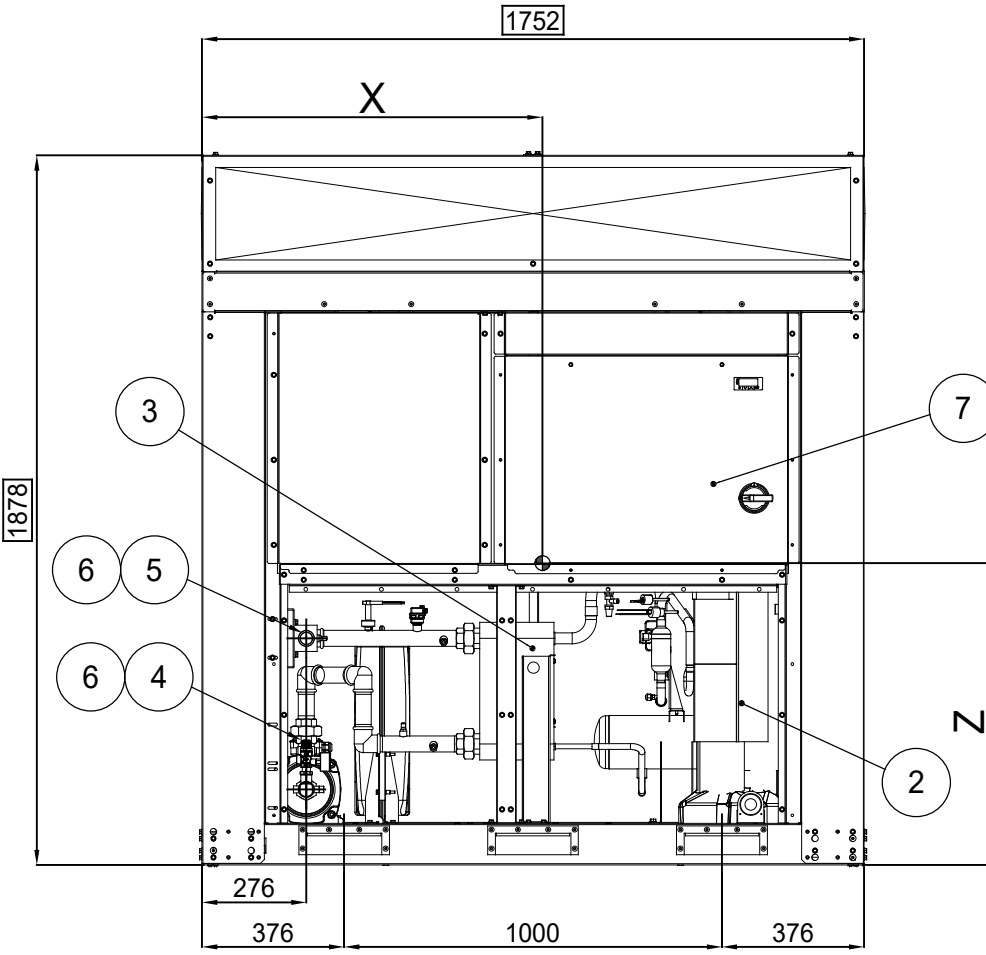
Denominazione / Identification
EWYT032÷040CZP÷H-A1

Dis./Dwg.
A.Lorenzi
Ver./Check
M.Caradonna
Appr./Passed
A.Consorti

Codice /Part. No.
EWYT032÷040CZP÷H-A1
Data/Date
28/12/2020
Foglio-Sheet
A3
Scala-Scale
1:20

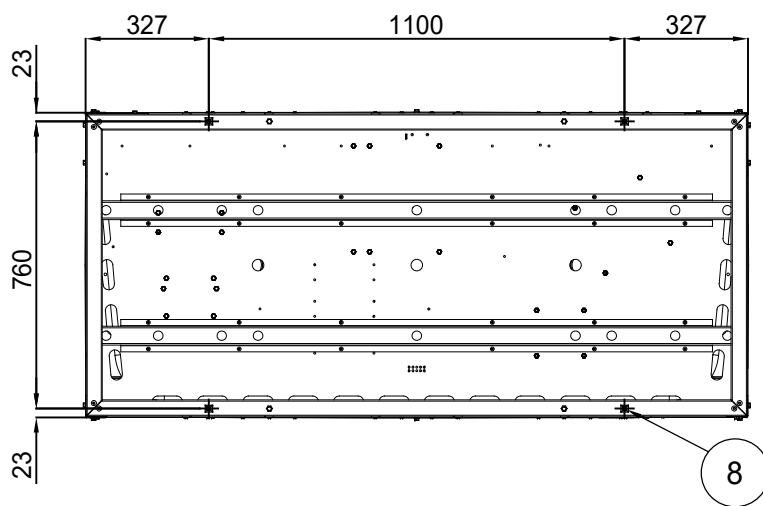


Tolleranza generale
General Tolerance ±20mm

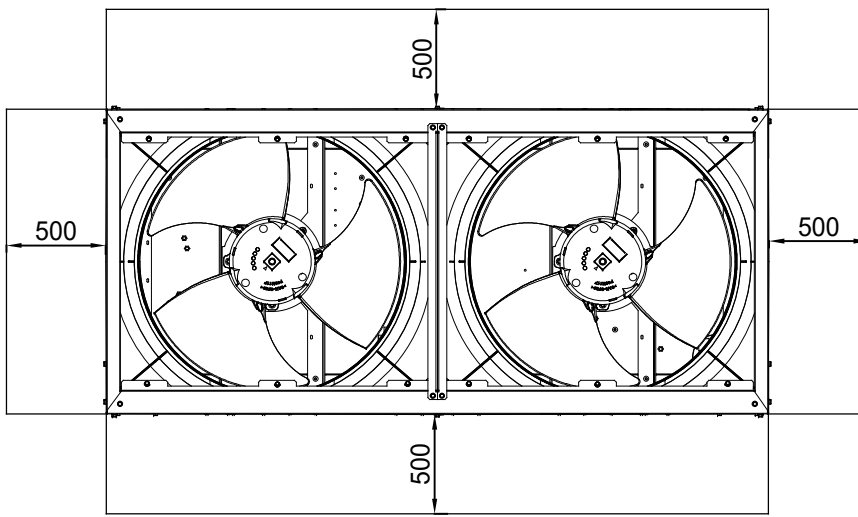


LEGENDA - LEGEND

1. BATTERIA CONDENSANTE
CONDENSER COIL
2. COMPRESSORE
COMPRESSOR
3. EVAPORATORE
EVAPORATOR
4. ENTRATA ACQUA EVAPORATORE/POMPA
EVAPORATOR/PUMP WATER INLET
5. USCITA ACQUA EVAPORATORE
EVAPORATOR WATER OUTLET
6. CONNESSIONI EVAPORATORE/POMPE 1" 1/4 GAS
EVAPORATOR/PUMPS CONNECTIONS 1" 1/4 GAS
7. PANNELLO DI COMANDO E CONTROLLO
OPERATING AND CONTROL PANEL
8. FORI Ø12 mm PER MONTAGGIO UNITA'
UNIT MOUNTING HOLES Ø12 mm

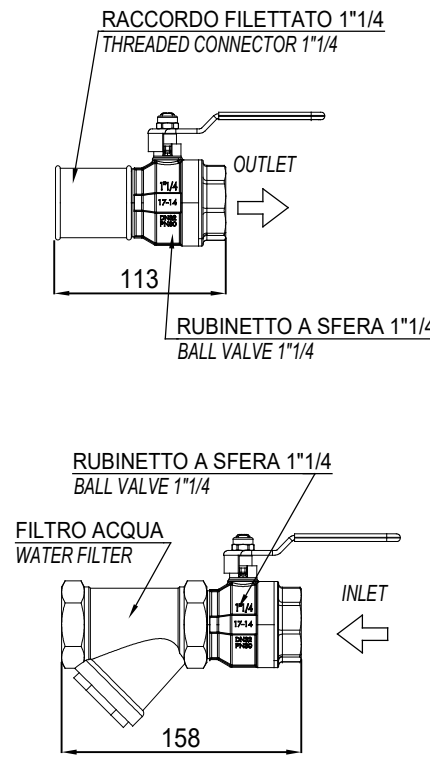


DISPOSIZIONE FORI MONTAGGIO (VISTA DAL BASSO)
MOUNTING HOLES LOCATION (BOTTOM VIEW)



SPAZIO MINIMO NECESSARIO MANUTENZIONE
MINIMUM REQUIRED MAINTENANCE

WATER KIT - SHIPPING LOOSE



VERSIONE VERSION	TIPO CONDENSATORE CONDENSER TYPE	PESO / WEIGHT KG		BARICENTRO CENTRE OF GRAVITY		
		SPEDIZIONE SHIPPING	FUNZIONAMENTO OPERATING	X	Y	Z
EWYT032CZP-A1 EWYT032CZH-A1	ALLUMINIO / ALUMINUM ACRYLIC COATED	393	396	950	455	801
EWYT040CZP-A1 EWYT040CZH-A1	ALLUMINIO / ALUMINUM ACRYLIC COATED	392	395	955	457	801